



**Weksler Accessories,
Options, Tools**

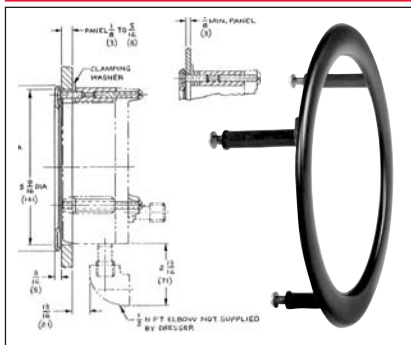
ROYAL AND REGAL GAUGE OPTIONS

CODE	DESCRIPTION
XNN	Paper Tag on Gauge
XNH	SS Tag Wired to Gauge
XMN	SS Tag Wired to Gauge
XOS ⁽¹⁾	Overload Stop
XVS ⁽¹⁾	Underload Stop
XTS	Throttle Screw
XDM	Dial Markings
X6B	Cleaned for Oxygen Service
XGV	Silicone Filled
XSH	Red Set Hand
XSJ	Dual Red Set Hands
XEP*	Max. Indicating Hand
XEQ*	Min. Indicating Hand
XSG	Safety Glass
XPD	Plastic Window
XC1	Certificate of Conformance
XC4	Calibration Certificate

* Not available in 3½" Regal

(1) Standard for 3½"

TYPE 1278M FLUSH MOUNTING RING



Gauge Size (inches)	Ring O.D. (inches)	A Dia. (inches)	"B"-Three Screws
			Size
4½	6.000	5.625	#10-24 x 1½"
6.765	7.25	¼-20 x 1½"	

Used to flush-mount 4½" and 6" Royal and bellows type gauges. Standard finish is black; polished stainless steel finish is available at an extra charge, 4½" and 6".

FLUSH MOUNTING RING

CODE	DESCRIPTION	TYPE	MOUNTING MATERIAL
56	Flush Mounting	1278M	Black
57	Rings*	1278MC	Polished SS

*For 4½" and 6" Royal / Regal gauges manufactured after 10/1/04

TYPE A-1285

Ring Wrench – 4½"

(For installing front threaded rings in 4½" #2, #4 safety cases)

TYPE A-1286

Ring Wrench – 6"

(For installing front threaded rings in 6" #4 aluminum safety cases)

