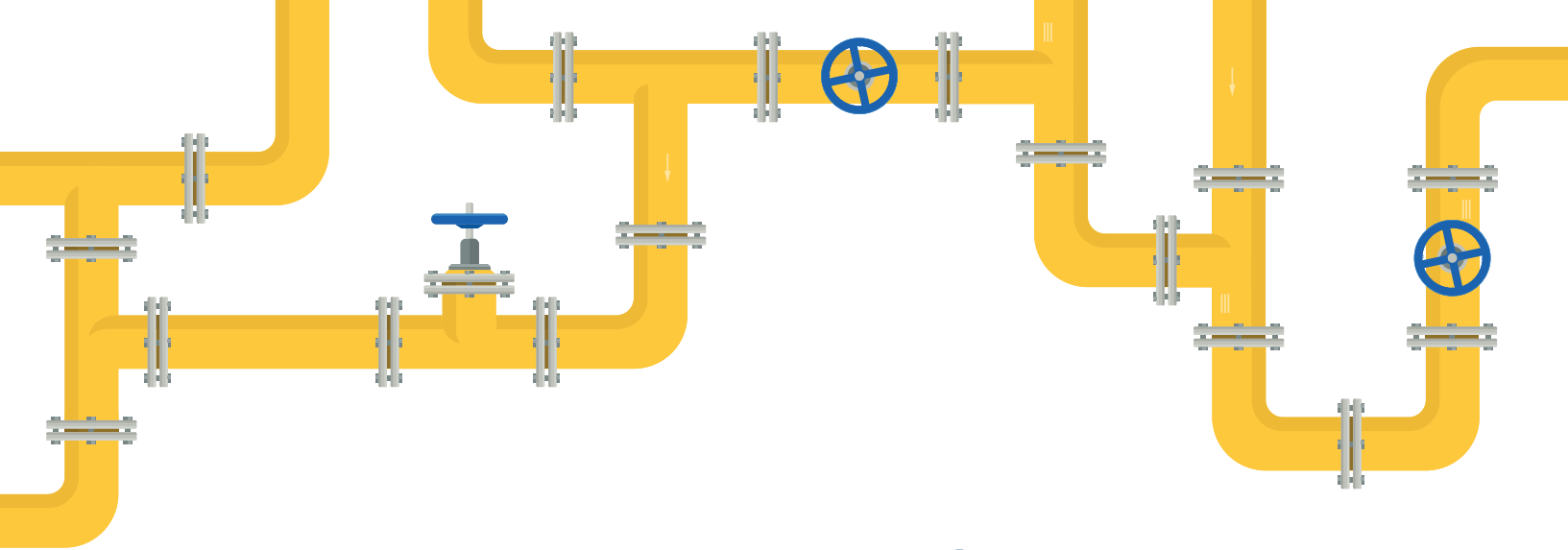


# Chicago Valves & Controls

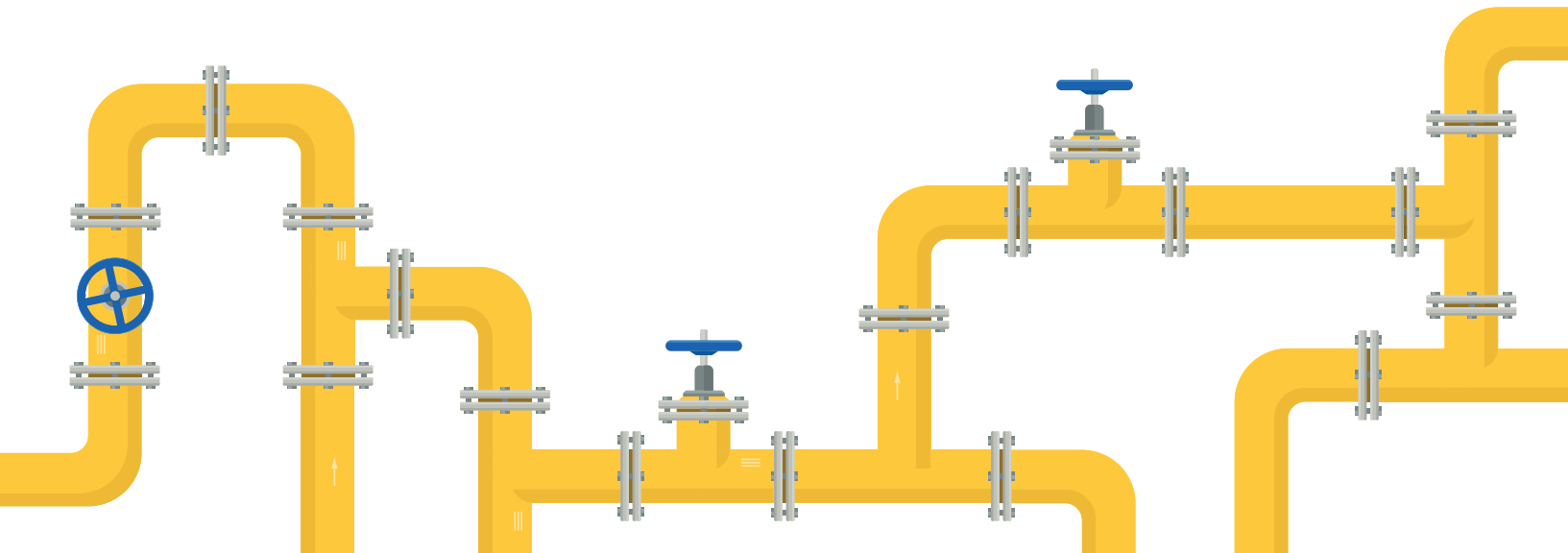




# TABLE OF CONTENTS

---

- High Performance Ball Valves..... Page 3
- Firesafe Ball Valves.....Page 6
- Sealweld Ball Valves .....Page 9
- Multi-Purpose Ball Valves ..... Page 11
- Butterfly Valves.....Page 18
- Multi-Turn Valves .....Page 19
- Controls .....Page 23
- Gear Operator .....Page 25
- Gallery.....Page 26



# High Performance Ball Valves

## SERIES 70/79

### API 608 3PC Standard and Full Port Ball Valve



**Size Range:**

1/4"-4"

**Body Material:**

Carbon Steel  
316 Stainless Steel  
Alloy 20  
SMO 254®

**Seat Material:**

TFM, RTFE, XN, DELRIN,  
PEEK, PTFE

**Ends:**

Threaded, Socket Weld, Butt  
Weld, Flanged

**Max Pressure:**

Vacuum to 1975/1480 PSI

**Temp:**

C/S: -20° - 600°F  
SST: -50° - 600°F

- ❖ ASME Class 800/600
- ❖ ASME B16.11
- ❖ ASME BI 6.25
- ❖ ASME BI 6.34
- ❖ API 598
- ❖ NACE MR0175
- ❖ ISO 5211
- ❖ Blowout Proof Stem
- ❖ Live Loaded Stem
- ❖ Encapsulated Body Seal
- ❖ Bolts Bolt To The Body
- ❖ Weldable Without Disassembly of Ends
- ❖ Lockable Handle
- ❖ Oval Handle
- ❖ Lockable Stem Extension

## SERIES HP70/79

### API 608 3PC Standard and Full Port Ball Valve



**Size Range:**

1/4"-2"

**Body Material:**

Carbon Steel  
316 Stainless Steel

**Seat Material:**

DELRIN, PEEK

**Ends:**

Threaded, Socket Weld, Butt  
Weld, Flanged

**Max Pressure:**

3200 PSI

**Temp:**

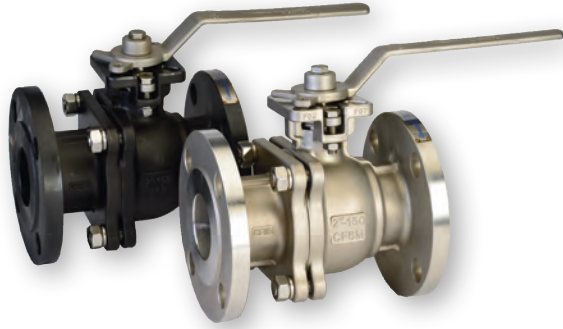
C/S: -20° - 600°F  
SST: -50° - 600°F

- ❖ ISO 5211
- ❖ ASME B16.11
- ❖ API 598
- ❖ Blowout Proof Stem
- ❖ Live Loaded Stem
- ❖ Encapsulated Body Seal
- ❖ Bolts Bolt To The Body
- ❖ Weldable Without Disassembly of Ends
- ❖ Lockable Handle
- ❖ NACE MR0175
- ❖ Oval Handle
- ❖ Lockable Stem Extension

## SERIES 82

Flanged Full Port Ball Valve API 608 Class 150/300/600

---



**Size Range:**  
1/2"-12"

**Body Material:**  
Carbon Steel  
316 Stainless Steel

**Seat Material:**  
TFM, XN, RTFE, PEEK, PTFE

**Ends:**  
Flanged

**Max Pressure:**  
285/720/1400 PSI

**Temp:**  
C/S: -20° - 550°F  
SST: -50° - 550°F

- ❖ API 608
- ❖ ASME B16.34
- ❖ ASME B16.35
- ❖ API 598
- ❖ NACE MR0175
- ❖ ISO 5211
- ❖ Blowout Proof Stem
- ❖ Live Loaded Stem
- ❖ Lockable Handle
- ❖ Elevated mounting pad allows the stem packing flange to be adjusted while the valve is in service without removing an actuator or handle
- ❖ Oval Handle
- ❖ Lockable Stem Extension

## SERIES 16

### Three Way Ball Valve



**Size Range:**  
1/2"-2"

**Body Material:**  
316 Stainless Steel

**Ends:**  
Threaded

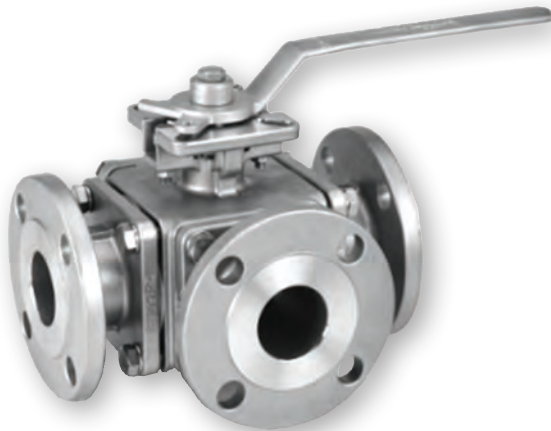
**Max Pressure:**  
1000 CWP

**Temp:**  
-50° - 450°F

- ❖ ASME B16.11
- ❖ API 598
- ❖ 4 Seats Design
- ❖ Blowout Proof Stem
- ❖ Live Loaded Stem
- ❖ L and T Balls
- ❖ Lockable Handle
- ❖ Anti-Static Design
- ❖ Elevated mounting pad allows the stem packing flange to be adjusted while the valve is in service without removing an actuator or handle

## SERIES 17

### Three and Four Way Ball Valve Class 150/300



**Size Range:**  
1/2"-4"

**Body Material:**  
Carbon Steel  
316 Stainless Steel

**Max Pressure:**  
280/720 PSI

**Temp:**

**Temp:**  
C/S: -20° - 500°F  
SST: -50° - 500°F

- ❖ Flange ASME B 16.5
- ❖ Threaded ASME B 16.11
- ❖ Socket Weld B 16.11
- ❖ API 598
- ❖ ISO 5211
- ❖ 4 Seat Design
- ❖ Blowout Proof Stem
- ❖ L, T, LL, 180° Balls
- ❖ Lockable Handle
- ❖ Anti-Static Design
- ❖ Easy Maintenance with SW and Threaded Ends
- ❖ Elevated mounting pad allows the stem packing flange to be adjusted while the valve is in service without removing an actuator or handle

# Firesafe Ball Valves

## SERIES FS70/79

### Firesafe Three Piece Standard and Full Port Ball Valve



**Size Range:**

1/4"-4"

**Body Material:**

Carbon Steel  
316 Stainless Steel  
SMO 254®

**Seat Material:**

TFM, RTFE, XN, PTFE

**Max Pressure:**

1975/1480 PSI

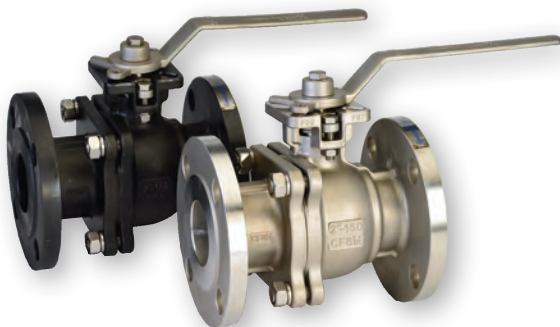
**Temp:**

C/S: -20° - 550°F  
SST: -50° - 550°F

- ❖ API 607 7th Edition
- ❖ ASME CLASS 800/600
- ❖ ASME B16.34
- ❖ ASME B16.5
- ❖ ASME B16.10
- ❖ API 598
- ❖ NACE MR0175
- ❖ ISO 5211
- ❖ Blowout Proof Stem
- ❖ Live Loaded Stem
- ❖ Lockable Handle
- ❖ Oval Handle
- ❖ Extended Lockable Handle

## SERIES FS82

### Firesafe Flanged Full Port Ball Valve Class 150/300/600



**Size Range:**

1/2"-12"

**Body Material:**

Carbon Steel  
316 Stainless Steel  
Alloy 20  
SMO 254®

**Seat Material:**

TFM, RTFE, XN

**Class:**

150/300/600

**Max Pressure:**

285/740/1480 PSI

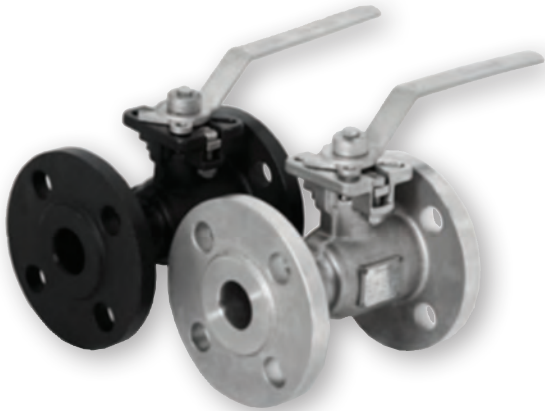
**Temp:**

C/S: -20° - 550°F  
SST: -50° - 550°F

- ❖ API 607 6th Edition
- ❖ API 608
- ❖ API 598
- ❖ ASME B16.34
- ❖ ASME B16.5
- ❖ NACE MR0175
- ❖ ISO 5211
- ❖ Blowout Proof Stem
- ❖ Live Loaded Stem
- ❖ Lockable Handle
- ❖ Extended Lockable Handle
- ❖ Elevated mounting pad allows the stem packing flange to be adjusted while the valve is in service without removing an actuator or handle

# SERIES FS81

Firesafe Flanged Standard Port Ball Valve Class 150/300



**Size Range:**  
1"-4"

**Body Material:**  
Carbon Steel  
316 Stainless Steel

**Seat Material:**  
TFM

**Class:**  
150/300

**Max Pressure:**  
285/740 PSI

**Temp:**  
C/S: -20° - 450°F  
SST: -50° - 450°F

- ❖ API 607 6th Edition
- ❖ ASME B16.34
- ❖ ASME B16.5
- ❖ ASME B16.10
- ❖ API 598
- ❖ NACE MR0175
- ❖ ISO 5211
- ❖ Blowout Proof Stem
- ❖ Live Loaded Stem

- ❖ Lockable Handle
- ❖ Extended Lockable Handle
- ❖ Elevated mounting pad allows the stem packing flange to be adjusted while the valve is in service without removing an actuator or handle

# SERIES FS27

Firesafe Sealweld Class 1500



**Size Range:**  
1/4"-2"

**Body Material:**  
Carbon Steel  
316 Stainless Steel

**Seat Material:**  
DELTRIN, PEEK

**Ends:**  
Threaded  
Socket Weld

**Class:**  
1500

**Max Pressure:**  
3600 PSI

**Max Temp:**  
DELTRIN 180°F  
PEEK 500°F

- ❖ API 607 6th Edition
- ❖ ASTM B16.34
- ❖ ASME B16.11
- ❖ API 598
- ❖ ISO 5211 Mounting Pad
- ❖ Blowout Proof Stem
- ❖ Live Load Stem
- ❖ Lockable Handle
- ❖ Anti-Static Design
- ❖ API 608
- ❖ NACE MR0175

# SERIES FS29

*Firesafe Sealweld Class 2500*

---



**Size Range:**

1/4"-2"

**Body Material:**

Carbon Steel  
316 Stainless Steel

**Seat Material:**

DELTRIN, PEEK

**Ends:**

Threaded  
Socket Weld

**Class:**

2500

**Max Pressure:**

6000 PSI

**Temp:**

DELTRIN 180°F  
PEEK 500°F

❖ API 607 6th Edition

❖ ASTM B16.34

❖ ASME B16.11

❖ API 598

❖ ISO 5211 Mounting Pad

❖ Blowout Proof Stem

❖ Live Load Stem

❖ Lockable Handle

❖ Anti-Static Design

❖ API 608

❖ NACE MR0175

# Sealweld Ball Valves

## SERIES N26

### Full Port Sealweld Ball Valve



**Size Range:**

1/4"-4"

**Body Material:**

Carbon Steel  
316 Stainless Steel

**Seat Material:**

RTFE

**Ends:**

Threaded

**Max Pressure:**

2000 CWP (1/4"-2")  
1500 CWP (2 1/2"-3")  
1000 CWP (4")

**Temp:**

C/S: -20° - 450°F  
SST: -50° - 550°F

- ❖ ASME B16.34
- ❖ ASME B16.11
- ❖ API 598
- ❖ NACE MR0175
- ❖ Blowout Proof Stem
- ❖ Lockable Handle
- ❖ Optional Oval Handle

## SERIES FS27

### Firesafe Sealweld Class 1500



**Size Range:**

1/4"-2"

**Body Material:**

Carbon Steel  
316 Stainless Steel

**Seat Material:**

DELRIN, PEEK

**Ends:**

Threaded  
Socket Weld

**Class:**

1500

**Max Pressure:**

3600 PSI

**Temp:**

DELRIN 180°F  
PEEK 500°F

- ❖ API 607 6th Edition
- ❖ ASTM B16.34
- ❖ ASME B16.11
- ❖ API 598
- ❖ ISO 5211 Mounting Pad
- ❖ Blowout Proof Stem
- ❖ Live Load Stem
- ❖ Lockable Handle
- ❖ Anti-Static Design
- ❖ API 608
- ❖ NACE MR0175

# SERIES FS29

*Firesafe Sealweld Class 2500*

---



**Size Range:**

1/4"-2"

**Body Material:**

Carbon Steel  
316 Stainless Steel

**Seat Material:**

DELTRIN, PEEK

**Ends:**

Threaded  
Socket Weld

**Class:**

2500

**Max Pressure:**

6000 PSI

**Temp:**

DELTRIN 180°F  
PEEK 500°F

- ❖ API 607 6th Edition
- ❖ ASTM B16.34
- ❖ ASME B16.11
- ❖ API 598
- ❖ ISO 5211 Mounting Pad
- ❖ Blowout Proof Stem
- ❖ Live Load Stem
- ❖ Lockable Handle
- ❖ Anti-Static Design
- ❖ API 608
- ❖ NACE MR0175

# Multi-Purpose Ball Valves

## SERIES 81

### Flanged Standard Port Ball Valve 150/300



**Size Range:**  
1/2"-4"

**Body Material:**  
Carbon Steel  
316 Stainless Steel

**Seat Material:**  
RTFE

**Class:**  
150

**Max Pressure:**  
285 PSI

**Temp:**  
C/S: -20° - 450°F  
SST: -50° - 450°F

- ❖ ASME B16.34
- ❖ ASME B16.35
- ❖ ASME B16.10
- ❖ API 598
- ❖ NACE MR0175
- ❖ ISO 5211
- ❖ Blowout Proof Stem
- ❖ Live Loaded Stem
- ❖ Lockable Lever
- ❖ Extended Lockable Handle

❖ Elevated mounting pad allows the stem packing flange to be adjusted while the valve is in service without removing an actuator or handle

## SERIES 82

### Flanged Full Port Ball Valve 150/300/600



**Size Range:**  
1/2"-12"

**Body Material:**  
Carbon Steel  
316 Stainless Steel

**Seat Material:**  
RTFE/TFM/XN/  
PTFE

**Class:**  
150/300/600

**Max Pressure:**  
285/740/1480 PSI

**Temp:**  
C/S: -20° - 550°F  
SST: -50° - 550°F

- ❖ ASME B16.34
- ❖ ASME B16.35
- ❖ ASME B16.10
- ❖ API 598
- ❖ NACE MR0175
- ❖ ISO 5211
- ❖ Blowout Proof Stem
- ❖ Live Loaded Stem
- ❖ Lockable Lever

❖ Elevated mounting pad allows the stem packing flange to be adjusted while the valve is in service without removing an actuator or handle

❖ Extended Lockable Handle

## Multi-Purpose Ball Valves

---

### SERIES 10

#### One Piece Unibody Forged Ball Valve

---



**Size Range:**

1/4"-2"

**Body Material:**

Forged Steel A105

**Seat Material:**

RTFE

**Ends:**

Threaded

**Max Pressure:**

2000 CWP

**Temp:**

-20° - 450°F

- ❖ ASME B16.11
- ❖ API 598
- ❖ NACE MR0175
- ❖ Blowout Proof Stem
- ❖ Lockable Handle
- ❖ Lockable Oval Handle
- ❖ Anti-Static Design

### SERIES 11

#### Two Piece Full Port Brass Ball Valve

---



**Size Range:**

1/4"-4"

**Body Material:**

Forged Brass

**Seat Material:**

PTFE

**Ends:**

Threaded

**Max Pressure:**

600 CWP

**Temp:**

400°F

- ❖ CSA ANSI Z21.15
- ❖ CSA ASME B16.44
- ❖ CSA ASME B16.33 (1/2"-2")
- ❖ CSA ASME B16.38
- ❖ ASME B16.11
- ❖ Blowout Proof Stem
- ❖ Lockable Handle
- ❖ Lockable Oval Handle

### SERIES 12

#### One Piece Unibody Reduced Port Ball Valve



**Size Range:**  
1/4"-2"

**Body Material:**  
316 Stainless Steel

**Seat Material:**  
RTFE

**Ends:**  
Threaded

**Max Pressure:**  
1000 CWP (1/4"-1 1/4")  
800 CWP (1 1/2"-2")

**Temp:**  
-50° - 450°F

- ❖ ASME B16.11
- ❖ API 598
- ❖ Blowout Proof Stem
- ❖ Lockable Handle
- ❖ Lockable Oval Handle
- ❖ Anti-Static Design

### SERIES N20

#### Two Piece Full Port 1000 CWP Ball Valve



**Size Range:**  
1/4"-3"

**Body Material:**  
316 Stainless Steel

**Seat Material:**  
RTFE

**Ends:**  
Threaded

**Max Pressure:**  
1000 CWP

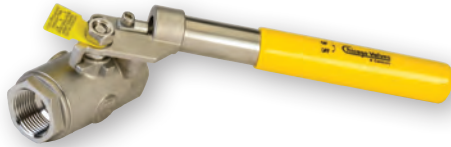
**Temp:**  
-50° - 450°F

- ❖ ASME B16.34
- ❖ ASME B16.11
- ❖ API 598
- ❖ NACE MR0175
- ❖ Blowout Proof Stem
- ❖ Lockable Handle
- ❖ Anti-Static Design
- ❖ Lockable Oval Handle
- ❖ Stem Extension Available

## Multi-Purpose Ball Valves

### SERIES 24

#### Two Piece Standard Port 2000/1500 CWP Ball Valve



**Size Range:**

1/4"-2"

**Body Material:**

Carbon Steel  
316 Stainless Steel

**Seat Material:**

RTFE  
K-Seat

**Ends:**

Threaded

**Max Pressure:**

2000 CWP (1/4"-1")  
1500 CWP (1 1/4"-2")  
150 WSP with RTFE seats  
250 WSP with K Seats

**Temp:**

C/S: -20° - 500°F  
SST: -50° - 500°F

- ❖ ASME B16.11
- ❖ ASME B16.34
- ❖ API 598
- ❖ Blowout Proof Stem
- ❖ Lockable Handle
- ❖ Lockable Oval Handle
- ❖ Spring-Loaded Handle
- ❖ Anti-Static Design
- ❖ NACE MR0175
- ❖ Stem Extension Available

### SERIES 33

#### Three Piece Full Port Ball Valve



**Size Range:**

1/4"-2"

**Body Material:**

Carbon Steel  
316 Stainless Steel

**Seat Material:**

RTFE

**Ends:**

Threaded  
Socket Weld  
BW

**Max Pressure:**

1000 CWP

**Temp:**

C/S: -20° - 450°F  
SST: -50° - 450°F

- ❖ ASME B16.11
- ❖ ASME B16.34
- ❖ ASME B16.25
- ❖ API 598
- ❖ Blowout Proof Stem
- ❖ Lockable Handle
- ❖ Lockable Oval Handle
- ❖ Anti-Static Design
- ❖ Stem Extension Available
- ❖ Available as a center body only

### SERIES 34

#### Three Piece Full Port Ball Valve



**Size Range:**  
1/4"-4"

**Body Material:**  
Carbon Steel  
316 Stainless Steel

**Seat Material:**  
RTFE

**Ends:**  
Threaded  
Socket Weld

**Max Pressure:**  
1000 CWP (1"-2")  
800 CWP (2 1/2"-3")  
600 CWP (4")

**Temp:**  
C/S: -20° - 450°F  
SST: -50° - 450°F

- ❖ ASME B16.11
- ❖ ASME B16.34
- ❖ ASME B16.25
- ❖ API 598
- ❖ Blowout Proof Stem
- ❖ Lockable Handle
- ❖ Optional Oval Handle
- ❖ Anti-Static Design
- ❖ Stem Extension Available
- ❖ Available as a center body only

### SERIES N20XST

#### Two Piece Full Port 150 CWP Safety Exhaust Ball Valve



**Size Range:**  
1/4"-3"

**Body Material:**  
316 Stainless Steel

**Seat Material:**  
RTFE

**Ends:**  
Threaded

**Max Pressure:**  
150

**Temp:**  
-50° - 450°F

- ❖ ASME B16.34
- ❖ ASME B16.11
- ❖ API 598
- ❖ NACE MR0175
- ❖ Blowout Proof Stem
- ❖ Lockable Handle
- ❖ Lockable Oval Handle
- ❖ Allows downstream pressure to be released when the valve is in the closed position

## Multi-Purpose Ball Valves

---

### SERIES 25

#### Two Piece Full Port Ball Valve Direct Mount — DMA

---



**Size Range:**  
1/4"-3"

**Body Material:**  
316 Stainless Steel

**Seat Material:**  
RTFE

**Ends:**  
Threaded

**Max Pressure:**  
1000 CWP

**Temp:**  
-50° - 450°F

- ❖ ASME B16.34
- ❖ ASME B16.11
- ❖ API 598
- ❖ ISO 5211
- ❖ Blowout Proof Stem
- ❖ Lockable Handle
- ❖ Optional Oval Handle
- ❖ Anti-Static Design
- ❖ Elevated mounting pad allows the stem packing flange to be adjusted while the valve is in service without removing an actuator or handle

### SERIES 35

#### Three Piece Full Port Ball Valve Direct Mount — DMA

---



**Size Range:**  
1/2"-4"

**Body Material:**  
316 Stainless Steel  
and Carbon Steel Ends

**Seat Material:**  
RTFE

**Ends:**  
Threaded/SW/BW

**Max Pressure:**  
1000 CWP (1/4"-2")  
800 CWP (2 1/2"-3")  
600 CWP (4")

**Temp:**  
C/S: -20° - 450°F  
SST: -50° - 450°F

- ❖ ASME B16.34
- ❖ ASME B16.11
- ❖ ASME B16.25
- ❖ ISO 5211
- ❖ API 598
- ❖ Blowout Proof Stem
- ❖ Live Loaded Stem
- ❖ Lockable Handle
- ❖ Anti-Static Design
- ❖ Elevated mounting pad allows the stem packing flange to be adjusted while the valve is in service without removing an actuator or handle

# SERIES 36

## Three Piece Full Port Ball Valve Direct Mount — DMA



**Size Range:**

1/2"-4"

**Body Material:**

316 Stainless Steel

**Seat Material:**

TFM, PTFE (Cavity Fill)

**Ends:**

Tri-Clamp  
Butt Weld

**Max Pressure:**

1000 CWP (1/2"-2")  
600 CWP (2 1/2"-4")

**Temp:**

-50° - 450°F

- ❖ ASME B16.34
- ❖ ASME BPE
- ❖ API 598
- ❖ ISO 5211
- ❖ Blowout Proof Stem
- ❖ Lockable Handle
- ❖ Optional Oval Handle
- ❖ Antistatic design
- ❖ Elevated mounting pad allows the stem packing flange to be adjusted while the valve is in service without removing an actuator or handle

# Butterfly Valves

## SERIES 57

### *High Performance Butterfly Valves*



- ❖ Class 150 & 300
- ❖ Lug & Wafer Style
- ❖ Carbon Steel & Stainless Steel
- ❖ Max pressure: 285/740 PSI
- ❖ NSF 61 & NSF 372 rated; only in 316 SST and RTFE seats
- ❖ Actuation options include lever handle, gear operated, pneumatic or electric actuated

## SERIES 55

### *Resilient Seated Butterfly Valve*



- ❖ Lug and Wafer
- ❖ 200 psi rating (1 1/2"-12")
- ❖ 150 psi rating (14"-48")
- ❖ Epoxy coated body
- ❖ Lockable handle
- ❖ ISO 5211 mounting pad
- ❖ API 609
- ❖ EPDM Seat
- ❖ BUNA Seat
- ❖ Gear operation
- ❖ Chain Wheel operated

# Multi-Turn Valves

## SERIES 28

### Forged Steel Class 800 Gate Valve



**Size Range:** 1/4"-2"

**Body Material:**

Forged Steel  
316L Forged Stainless Steel

**Ends:**

Threaded  
Socket Weld

**Max Pressure:**

FS: 1975 PSI  
SST: 1600 PSI

❖ ASME A 182/F 316L

❖ ASME A105

❖ ASME B16.11

❖ ASME B16.20.1

❖ API 598

❖ API 602\*

❖ NACE MR0175

*\*Optional API 624 (with API 622 packing)*

## SERIES 38

### Forged Steel Class 800 Globe Valve



**Size Range:** 1/4"-2"

**Body Material:**

Forged Steel  
316L Forged Stainless Steel

**Ends:**

Threaded  
Socket Weld

**Max Pressure:**

FS: 1975 PSI  
SST: 1600 PSI

❖ ASME A 182/F 316L

❖ ASME A105

❖ ASME B16.11

❖ ASME B16.20.1

❖ API 598

❖ API 602\*

❖ NACE MR0175

*\*Optional API 624 (with API 622 packing)*

## SERIES P48/48

### Forged Steel Class 800 Piston/Check Valve



**Size Range:** 1/4"-2"

**Body Material:**

Forged Steel  
316L Forged Stainless Steel

**Ends:**

Threaded  
Socket Weld

**Max Pressure:**

FS: 1975 PSI  
SST: 1600 PSI

❖ ASME A 182/F 316L

❖ ASME A105

❖ ASME B16.11

❖ ASME B16.20.1

❖ API 598

❖ API 602

❖ NACE MR0175

## Multi-Turn Valves

---

### SERIES 21

#### Cast Steel Gate Valve

---



**Size Range:** 2"-36"

**Body Material:**  
Cast Steel WCB

**Ends:**  
Classes 150/300/600  
Flange, BW, RTJ

**Max Pressure:**  
285/740/1480 PSI

**Max Temp:** 1000°F

- ❖ API 600
- ❖ ASME B16.10
- ❖ ASME B16.5
- ❖ ASME B16.47
- ❖ ASME B16.25
- ❖ API 598
- ❖ NACE MR0175

### SERIES 31

#### Cast Steel Globe Valve

---



**Size Range:** 2"-18"

**Body Material:**  
Cast Steel WCB

**Ends:**  
Classes 150/300/600  
Flange, BW, RTJ

**Max Pressure:**  
285/740/1480 PSI

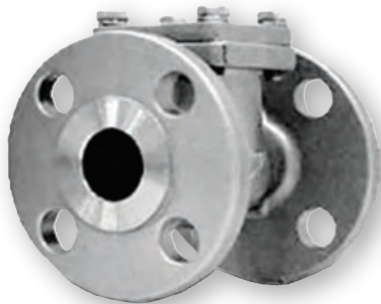
**Max Temp:** 1000°F

- ❖ ASME B16.34
- ❖ ASME B16.10
- ❖ ASME B16.5
- ❖ ASME B16.25
- ❖ API 598
- ❖ NACE MRO175

### SERIES 41

#### Cast Steel Swing Check Valve

---



**Size Range:** 2"-36"

**Body Material:**  
Cast Steel WCB

**Ends:**  
Classes 150/300/600  
Flange, BW, RTJ

**Max Pressure:**  
285/740/1480 PSI

**Max Temp:** 1000°F

- ❖ ASME B16.34
- ❖ ASME B16.10
- ❖ ASME B16.5
- ❖ ASME B16.25
- ❖ API 598
- ❖ NACE MRO175

## SERIES 216

### 316 Stainless Steel Flanged Gate Valve



**Size Range:** 1/2"-12"

**Body Material:**  
316 Stainless Steel

**Ends:**  
Class 150/300

**Max Pressure:** 275/720 PSI

**Max Temp:** 1000°F

- ❖ API 603
- ❖ ASME B16.34
- ❖ ASME B16.10
- ❖ ASME B16.5
- ❖ ASME B16.25
- ❖ API 598

## SERIES 316

### 316 Stainless Steel Flanged Globe Valve



**Size Range:** 1/2"-12"

**Body Material:**  
316 Stainless Steel

**Ends:**  
Class 150/300

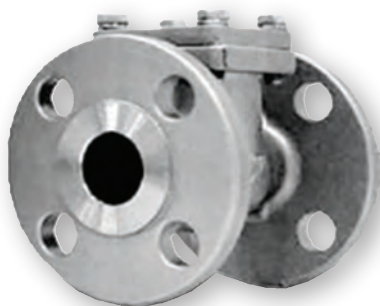
**Max Pressure:** 275/720 PSI

**Max Temp:** 1000°F

- ❖ ASME B16.34
- ❖ ASME B16.10
- ❖ ASME B16.5
- ❖ ASME B16.25
- ❖ API 598

## SERIES 416

### 316 Stainless Steel Flanged Swing Check Valve



**Size Range:** 1/2"-12"

**Body Material:**  
316 Stainless Steel

**Ends:**  
Class 150/300

**Max Pressure:** 275/720 PSI

**Max Temp:** 1000°F

- ❖ ASME B16.34
- ❖ ASME B16.10
- ❖ ASME B16.5
- ❖ ASME B16.25
- ❖ API 598

## Multi-Turn Valves

---

### SERIES 226

#### 200# Gate Valve

---



**Size Range:** 1/2"-3"

**Body Material:**

316 Stainless Steel

**Ends:**

Threaded

Socket Weld

**Max Pressure:** 200 CWP

**Max Temp:** 350°F

❖ API 598

❖ ASME B1.20.1

❖ ASME B16.11

### SERIES 326

#### 200# Globe Valve

---



**Size Range:** 1/2"-2"

**Body Material:**

316 Stainless Steel

**Ends:**

Threaded

Socket Weld

**Max Pressure:** 200 CWP

**Max Temp:** 350°F

❖ API 598

❖ ASME B1.20.1

❖ ASME B16.11

### SERIES 426

#### 200# Swing Check Valve

---



**Size Range:** 1/4"-3"

**Body Material:**

316 Stainless Steel

**Ends:**

Threaded

Socket Weld

**Max Pressure:** 200 CWP

**Max Temp:** 350°F

❖ API 598

❖ ASME B1.20.1

❖ ASME B16.11

## SERIES CXL PNEUMATIC ACTUATORS



Anodized Body and Ends

Epoxy Polyester Coating

Nickle Plated Alloy Steel Pinion

Die-Cast Pistons Adjusting Travel Preloaded Springs

Torque Output up to 53595 LBF-IN

Temp:  
-4° - 176°F

- ❖ ISO 5211
- ❖ DIN 3337
- ❖ VID/VIE 3845
- ❖ NAMUR
- ❖ Optional high temp kits available rated to 248°F
- ❖ Optional low temp kits available rated to -40°F

## ELECTRIC ACTUATORS SERIES CVE



- ❖ Compact & Light aluminum housing, Nema 4X type
- ❖ Hard Anodizing corrosion resistance
- ❖ Output torque ranges from 176 in-lbs to 79,200 in-lbs
- ❖ Wide range of voltages and currents
- ❖ Self locking functionality
- ❖ Manual override in all models
- ❖ ISO 5211 mounting
- ❖ standard with 2 auxiliary switches, heater and thermostat
- ❖ removable drive bushing

# SERIES CLS 300

Limit Switch Box MEMA 4, 4X, IP 67

---



Design complies with NEMA 4, 4X, IP67

Dual ½ NPT cable entries

Complies to NAMUR mounting standards

NAMUR and ISO 5211 adjustable bracket

Spring-loaded splined cams are easily adjustable without tools

Stainless Steel Fasteners

# SOLENOID CM310

---



Extruded Aluminum Body

Anodized finish

1/4" NPT

Namur Mount

stainless Steel bolts

3 Way and 4 Way

Weatherproof NEMA4/IP 65

Coils: AC 110V, AC 220V, AC 24V, DC 12V, DC 24V

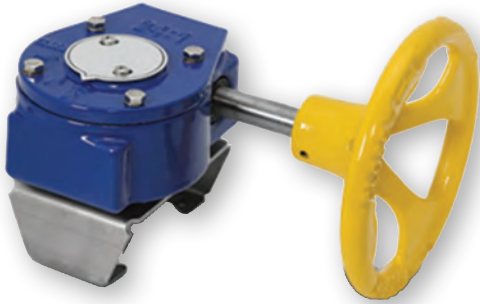
# Gear Operator

## SERIES CGO

### *Gear Operator*

---

Torque range 1325-132,760 In-Lbs ISO 5211 mounting  
Chain Wheel operation available



# Gallery



**Lockable Stem Extension**



**Gear Operated  
Butterfly Valve**



**Extended Mounting Kits**



**Pneumatically Actuated  
Series 25 and CLS 300  
Limit Switch**



**Pneumatically Actuated  
Series 35 and CLS 300  
Limit Switch**



**Pneumatically Actuated  
Series 36 and CLS 300  
Limit Switch**



**Pneumatically Actuated  
Series 82/F82 and CLS 300  
Limit Switch**

Distributed By: M&M Control Service, Inc. [www.mmcontrol.com/chicagovalves.php](http://www.mmcontrol.com/chicagovalves.php) 800-876-0036 847-356-0566

**Chicago Valves**  
**& Controls**

2026

Due to ongoing development of our product line, specifications subject to change without notice.  
Teflon® is a registered trademark of E.I. DuPont.