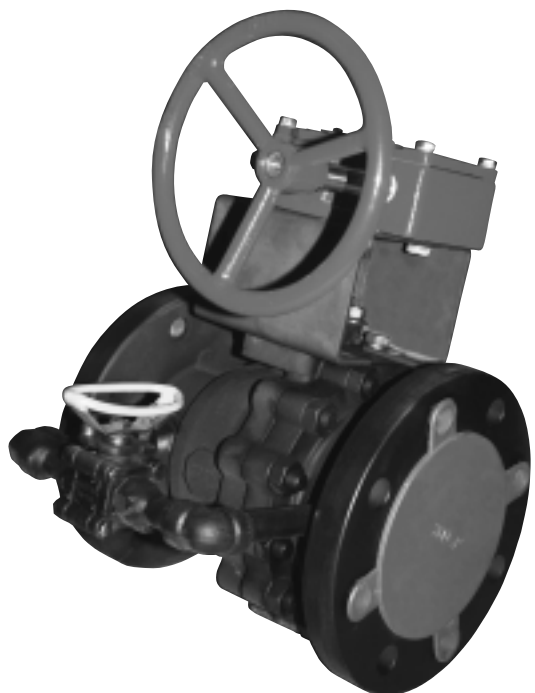


STEAM ISOLATION BALL VALVE

SIZES 1½" - 12"
ANSI CLASS 300



ISOLATION BALL VALVE

APPLICATION DATA

- District Steam Central Heating Systems
- Low Temperature Steam Distribution and Isolation Service

- **Positive Shutoff** for isolation
- **Face to Face Dimensions** same as Gate Valve
- **End Flanges Dimensions** same as Gate Valve
- **Low Center of Gravity** close to the pipeline center
- **Quarter Turn Operation**
- **Does Not Require large valve vaults**
- **Corrosion Resistant** internal parts
- **Compact Design** less weight than Gate Valve
- **Ease of maintenance and rebuild**
- **Backup Metal Seats**
- **Ball Support** on the larger sizes
- **Optional By-Pass**
- **By-Pass includes** Triad 3-piece valve
- **Extended Warranty** available when valves provided with optional By-Pass

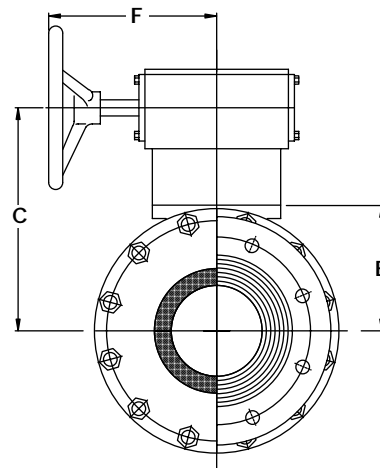
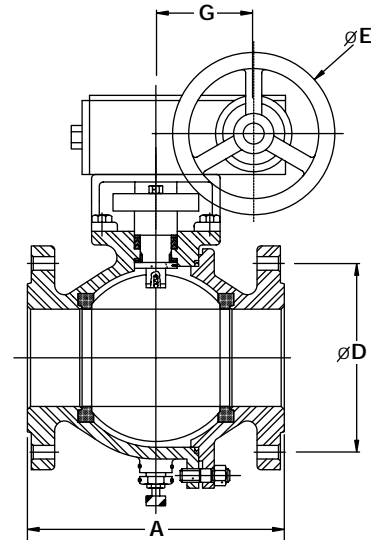
STEAM ISOLATION BALL VALVE

SPECIFICATIONS

Steam distribution and isolation valves must be 2-piece flanged full port ball valves. Valves must have ASTM A216-WCB carbon steel body and end cap with 316 stainless steel ball and stem. The stem packing must be graphite and live loaded to compensate for changes in temperature and wear on all size valves. Seats must be made of PEEK. Valves must have a blowout proof stem design and integrally cast actuator mounting pad. Valves must offer bubble tight shutoff.

MATERIALS OF CONSTRUCTION

BodyASTM A216 Gr WCB
End CapASTM A216 Gr WCB
BallASTM A351 Gr CF8M
SeatPEEK
StemASTM A479 Type 316
Body SealSpiral Wound (316 Graphite)
Body NutASTM A194 2H
Body StudASTM A193 B7
Anti-Static DeviceSS304
Packing ProtectorPEEK
Thrust Washer ProtectorPEEK
Thrust Washer50% SS316 + 50% PTFE
Stem Bearing15% RPTFE
Stem PackingRPTFE/Graphite
Packing GlandASTM A167 Type 304
Packing followerASTM A216 Gr WCB
Gland BoltSS304
Belleville WasherSS301
Tab Lock WasherSS300
Travel Stop HousingWCB
Housing BoltSS300
Travel StopZinc Plated Carbon Steel
Travel Stop SleeveASTM A167 Type 304
Travel Stop BoltSS300
HandleSS304/Ductile Iron
Lock NutASTM A167 Type 304
Handle BoltCarbon Steel
Handle SleeveVinyl through 2"
Locking DeviceSS304
Snap RingNickel Plated Carbon Steel



**DIMENSIONS inches (mm)
and WEIGHTS pounds (kg)**

Size	A	B	C	D	E	F	G	Wgt.
1½ (38)	7.5 (190.2)	2.6 (66.0)	5.95 (151.1)	4.5 (114.3)	7.8 (198.1)	5.75 (146.1)	1.67 (42.4)	19 (9)
2 (50)	8.5 (215.9)	2.95 (74.9)	6.3 (160.0)	5.0 (127.0)	7.8 (198.1)	5.75 (146.1)	1.67 (42.4)	33 (15)
2½ (64)	9.5 (241.3)	3.39 (86.1)	9.02 (229.1)	5.88 (149.4)	11.81 (300.0)	10 (254.0)	2.48 (63.0)	50 (23)
3 (76)	11.12 (282.4)	3.72 (94.5)	9.35 (237.5)	6.62 (168.2)	11.81 (300.0)	10 (254.0)	2.48 (63.0)	68 (31)
4 (102)	12.0 (304.8)	4.35 (110.5)	9.98 (253.5)	7.88 (200.2)	11.81 (300.0)	10 (254.0)	2.48 (63.0)	96 (44)
6 (152)	15.88 (403.4)	7.19 (182.6)	14.97 (380.2)	10.62 (269.8)	11.81 (300.0)	10 (254.0)	3.15 (80.0)	230 (104)
8 (203)	19.75 (501.7)	8.64 (219.5)	16.42 (417.1)	13.0 (330.2)	11.81 (300.0)	10 (254.0)	3.15 (80.0)	430 (195)
10 (254)	22.38 (568.5)	9.69 (246.1)	17.89 (454.4)	15.25 (387.4)	15.75 (400.1)	13.5 (342.9)	4.72 (119.9)	610 ⁰ (277)
12 (305)	25.5 (647.7)	11.26 (286.1)	19.46 (494.3)	17.75 (450.9)	15.75 (400.1)	13.5 (342.9)	4.72 (119.9)	950 (431)

ISOLATION VALVE