



# **BOILER FEED UNITS**

## **5000 SERIES**

### **STEEL TANK**

#### **ENERGY EFFICIENT DESIGN, PROVEN PERFORMANCE AND THE RIGHT SIZE FOR YOUR APPLICATION**

*Sterlco® Boiler Feed Pumps set new standards of performance. Reliable and efficient, each unit features heavy gauge, 3/16" steel receivers for long operating life. In addition, 3450 RPM motors assure maximum efficiency while maintaining minimum motor horsepower. Available in a wide range of sizes, these U.S. made pumps have just the right accessories and options to meet your unique needs. What's more, a nationwide network of stocking distributors means fast, easy, year-round access to pumps and replacement parts.*

#### **STANDARD FEATURES**

- Heavy gauge steel receivers
- Simplex or duplex construction
- Bronze fitted centrifugal pumps
- Energy efficient 3450 RPM motors
- Automatic venting
- "Sterl-Seal" ceramic pump seal
- Heavy-duty make-up water valve
- Isolation valves
- Gauge glass



Shown with Optional Control Panel





Shown with Optional Control Panel



A



B



C

## Built-In Features For Precise, Dependable Performance

- *Receiver: Minimum 3/16" heavy steel construction. Sizes ranging from 125 gallons up to 714 gallons. Narrow diameter, up to 250 gallons fit through standard door openings.*
- *Motors: Heavy-duty, ballbearing, close-coupled pump motors with stainless steel shaft. 3450 RPM for higher hydraulic efficiency and more economical operation.*
- *Make-up Water Valve: These are plug mounted with stainless steel float. Rated up to 45 PSI inlet water pressure. At pressures exceeding 45 PSI, a PRV is required on the inlet cold water line.*
- *Operation: Boiler feed pump(s) are controlled by a water level controller mounted on the boiler. Upon demand, water is pumped from the receiver to the boiler. If condensate is lost or delayed in the system, it is automatically replaced in the receiver through the make-up water valve.*
- *"SterlSeal" Pump Seal (A): Features the ultimate in ceramic technology for exceptionally long life. Because the seal runs on the bronze impeller hub, the motor shaft is literally outside the pump. Consequently, the shaft is not exposed to corrosion by condensate. Rated for temperatures up to 250°F.*
- *Isolation Valve (B): Standard on 5000-JF Series*
- *Centrifugal Pump (C): Offers outstanding combinations of pressures and gallonage. Unique design features make it virtually impossible to create overload conditions.*

## Special Options

- *Stainless steel receivers*
- *Electric alternator for duplex units*
- *Thermometer*
- *Solenoid operated make-up water valve with reverse acting float switch*
- *McDonnell-Miller #21 make-up water valve*
- *Special motor construction, such as totally enclosed and explosion proof, is available*
- *Complete NEMA 12 control panel*
- *1750 RPM motors, larger pumping capacities and higher discharge pressures - consult factory*



## Complete NEMA 12 Control Panel (Optional)

*Motor Circuit Protector, HOA Selector Switch, External Reset, Control Circuit Transformer, Pilot Light (pump running), Removable Mounting Plate and Terminal Strip in a Single NEMA 12 Enclosure, Mounted and Wired, with Single Point Power Connection.*

## 5000 Series Engineering and Capacity Data

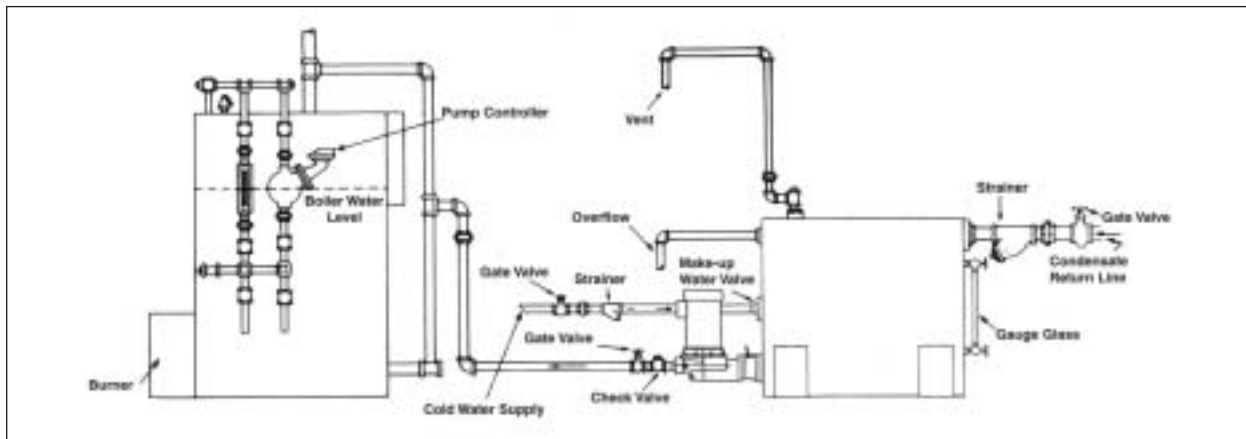
BOILER HP	DISCHARGE PRESSURE PSI	GPM	SIMPLEX		DUPLEX		MOTOR HP	REC. CAP. GAL.
			MODEL NO.	APPROX. SHIP WT.	MODEL NO.	APPROX. SHIP WT.		
150	20	25	502150-JF	570	502150-JDF	665	3/4	125
	30		503150-JF	590	503150-JDF	685	1	
	40		504150-JF	600	504150-JDF	695	1 1/2	
	50		505150-JF	615	505150-JDF	710	2	
200	20	30	502200-JF	635	502200-JDF	690	3/4	146
	30		503200-JF	640	503200-JDF	730	1	
	40		504200-JF	650	504200-JDF	750	1 1/2	
	50		505200-JF	670	505200-JDF	770	2	
250	20	35	502250-JF	800	502250-JDF	870	3/4	175
	30		503250-JF	805	503250-JDF	875	1	
	40		504250-JF	815	504250-JDF	885	1 1/2	
	50		505250-JF	840	505250-JDF	910	2	
300	20	45	502300-JF	830	502300-JDF	920	1	210
	30		503300-JF	835	503300-JDF	930	1 1/2	
	40		504300-JF	840	504300-JDF	940	1 1/2	
	50		505300-JF	860	505300-JDF	980	2	
400	20	55	502400-JF	900	502400-JDF	995	1 1/2	250
	30		503400-JF	905	503400-JDF	1005	1 1/2	
	40		504400-JF	920	504400-JDF	1020	2	
	50		505400-JF	930	505400-JDF	1030	5	
500	20	70	502500-JF	975	502500-JDF	1070	2	326
	30		503500-JF	980	503500-JDF	1075	2	
	40		504500-JF	990	504500-JDF	1085	3	
	50		505500-JF	1045	505500-JDF	1140	5	
600	20	85	502600-JF	1070	502600-JDF	1170	2	395
	30		503600-JF	1070	503600-JDF	1170	3	
	40		504600-JF	1090	504600-JDF	1190	5	
	50		505600-JF	1090	505600-JDF	1190	5	
700	20	100	502700-JF	1235	502700-JDF	1335	2	470
	30		503700-JF	1245	503700-JDF	1345	5	
	40		504700-JF	1245	504700-JDF	1345	5	
	50		505700-JF	1295	505700-JDF	1395	5	

### Sample Specification

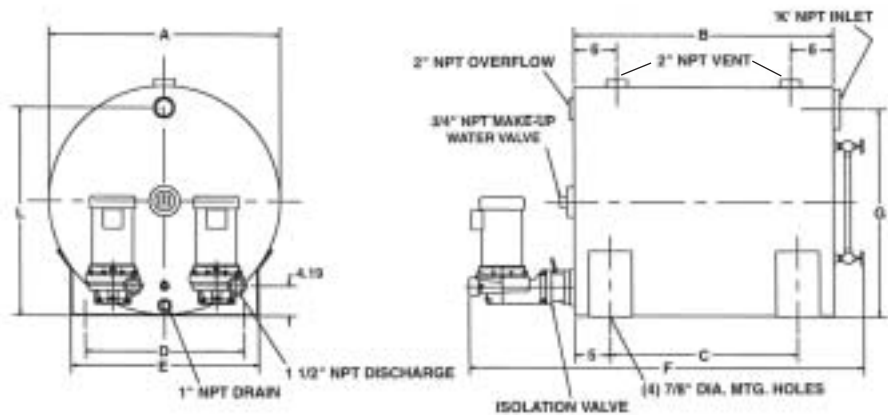
Furnish and install, where indicated on plans, a Sterling 5000-JF Series (simplex, duplex, triplex...) boiler feed unit(s). Each pump shall deliver \_\_\_\_\_ GPM at a discharge pressure of \_\_\_\_\_ PSI. The unit(s) shall be factory assembled and tested by the pump manufacturer and shall include a receiver, pump(s), make-up water valve, gauge glass, isolation valve(s) and accessories.

The receiver shall have a capacity of \_\_\_\_\_ gallons and

be of minimum 3/16" gauge steel construction. Pump(s) shall be of the centrifugal type with two-piece enclosed brass impeller, cast iron housing, high temperature (250°F) mechanical seal and stainless steel motor shaft. The make-up water valve is to be a mechanical type with a stainless steel float. A flat perforated brass strainer shall be provided in the inlet to the pump from the tank. The motor(s) shall be horizontal, 3450 RPM, \_\_\_\_\_ phase, \_\_\_\_\_ volt, 60 cycle, \_\_\_\_\_ H.P.



# STERLING



Gallon	A	B	C	D	E	F	G	K	L
125	32	36	26	22	26	54.88	29.19	3	29.19
146	32	42	32	22	26	60.88	29.19	3	29.19
175	32	50	40	22	26	68.88	29.19	3	29.19
210	32	60	50	22	26	78.88	29.19	3	29.19
250	32	72	62	22	26	90.88	29.19	3	29.19
326	44	50	40	34	38	68.88	40.69	4	41.19
395	44	60	50	34	38	78.88	40.69	4	41.19
470	44	72	62	34	38	90.88	40.69	4	41.19
564	48	72	62	38	42	90.88	44.69	4	45.19
595	54	60	50	44	48	78.88	50.69	4	51.19
714	54	72	62	44	48	90.88	49.69	6	51.19



5200 W. Clinton Avenue  
 Milwaukee, Wisconsin 53223  
 Tel. 414.354.0970 Toll Free 888.777.4085 Fax 414.354.6421  
 ©2003 Sterling [www.steamcontrolproducts.com](http://www.steamcontrolproducts.com)

STERLCO PRODUCTS INCLUDE: HAND RADIATOR VALVES • THERMOSTATIC TRAPS • FLOAT AND THERMOSTATIC TRAPS • INVERTED BUCKET TRAPS • CAST IRON STRAINERS • BRASS STRAINERS • TANK AND PROCESS TEMPERATURE CONTROL VALVES • BOILER FEED UNITS • CONDENSATE PUMPS