



CONDENSATE PUMPS

4200 SERIES

CAST IRON TANK

ENERGY EFFICIENT DESIGN, PROVEN PERFORMANCE AND THE RIGHT SIZE FOR YOUR APPLICATION

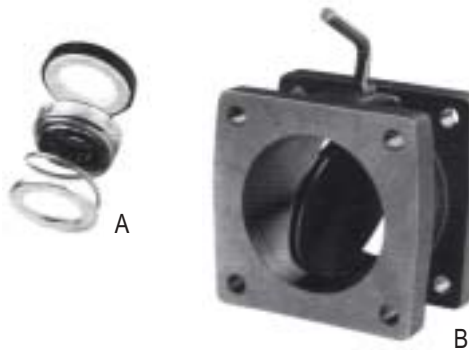
Sterlco® Condensate Return Pumps set new standards of performance. Reliable and efficient, each unit features heavy-duty cast iron receivers for long operating life. In addition, 3450 RPM motors assure maximum efficiency while maintaining minimum motor horsepower. Available in a wide range of sizes, these U.S. made pumps have just the right accessories and options to meet your unique needs. What's more, a nationwide network of stocking distributors means fast, easy, year-round access to pumps and replacement parts.



FEATURES

- Heavy-duty cast iron receivers
- Simplex or duplex construction
- Bronze fitted centrifugal pumps
- Energy efficient 3450 RPM motors
- Automatic venting
- "Sterl-Seal" ceramic pump seal
- Heavy-duty float switch
- Wide range of options and accessories





Built-In Features For Precise, Dependable Performance

- *Motors: Heavy-duty, ballbearing, close-coupled pump motors with stainless steel shaft. 3450 RPM for greater efficiency and more economical operation.*
- *Float Switch: Two-pole, drip proof case, stainless steel float and float rod, double-break silver-to-silver contacts. Float travel adjustment is easy, visible and accessible.*
- *Automatic Venting: Provides for efficient operation and long life by venting air and flushing seal area.*
- *Large Tanks: Plenty of capacity for maximum rating of pump. Return inlet is low. Occupies a minimum of floor space.*
- *Centrifugal Pump: Offers a wide range of pressures and GPM. Unique design features provide for ease of servicing.*
- *Impeller: Made of brass for long life. Efficient design provides maximum capacity, minimum motor load.*
- *“SterlSeal” Pump Seal (A): Features the ultimate in ceramic technology for exceptionally long life. Because the seal runs on the bronze impeller hub, the motor shaft is literally outside the pump. Consequently, the shaft is not exposed to corrosion by condensate. Rated for temperatures up to 250°F.*
- *Isolation Valve (B): Optional on 4200 Series Condensate Pumps*

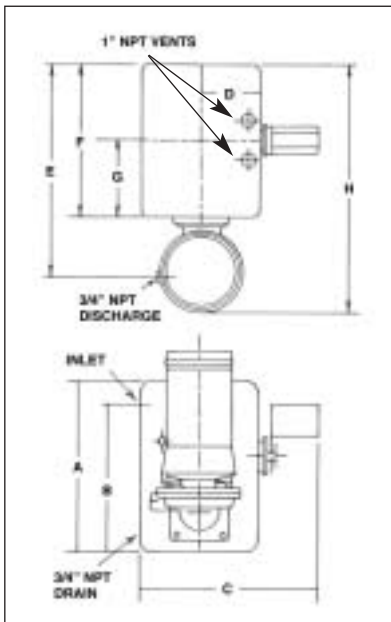
Special Options

- *Mechanical and electrical alternators*
- *Gauge glass*
- *Thermometer*
- *Discharge pressure gauges*
- *Isolation valves*
- *Special motor construction, such as totally enclosed and explosion proof, is available*
- *Magnetic starters with H-O-A selector switches*
- *1750 RPM motors, larger pumping capacities and higher discharge pressures - consult factory*
- *Complete NEMA 12 Control Panel*

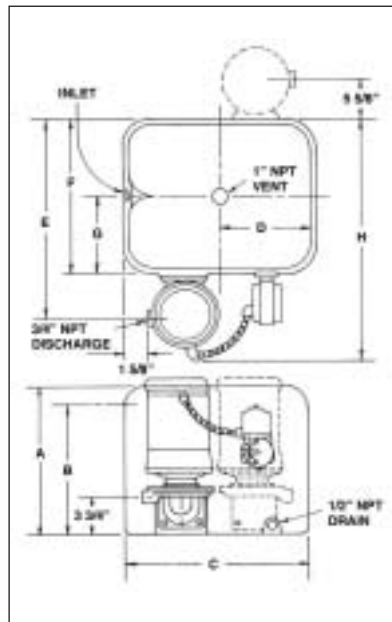


Complete NEMA 12 Control Panel (Optional)

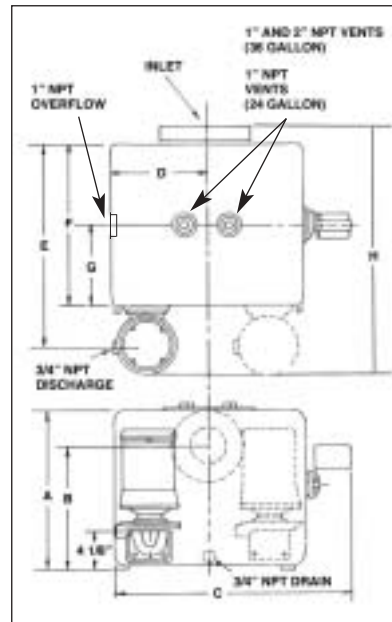
Motor Circuit Protector, HOA Selector Switch, External Reset, Control Circuit Transformer, Pilot Light (pump running), Removable Mounting Plate and Terminal Strip in a Single NEMA 12 Enclosure, Mounted and Wired, with Single Point Power Connection.



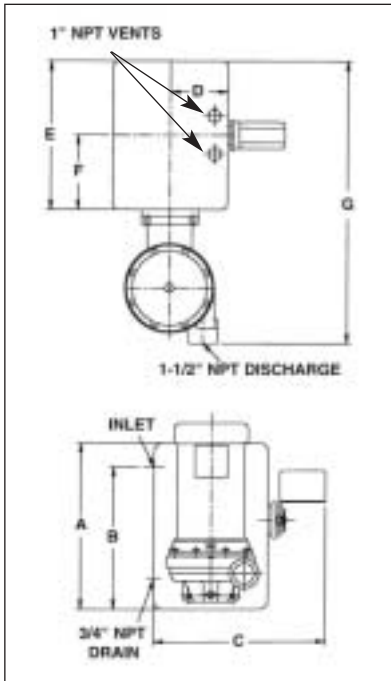
**G SERIES
6 GALLON TANK**



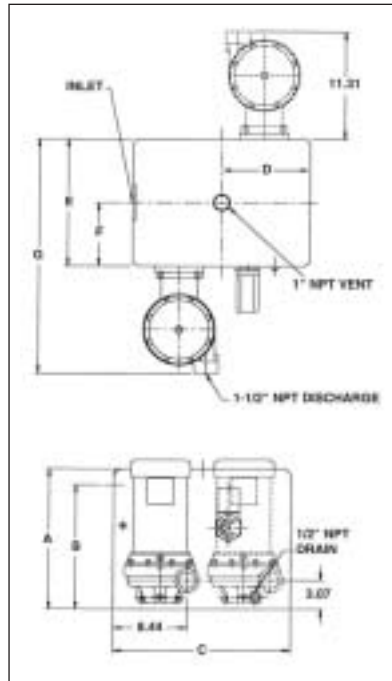
**G SERIES
13.5 GALLON TANK**



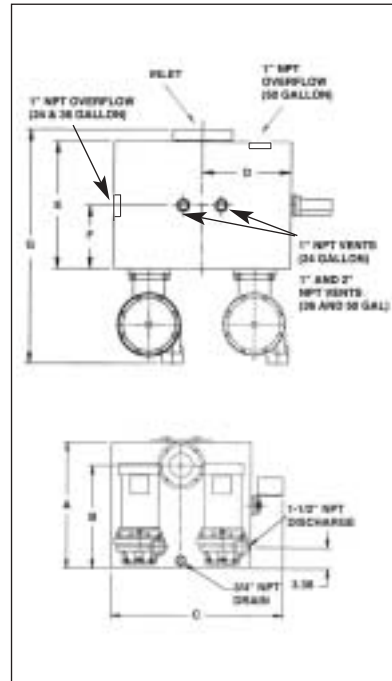
**G SERIES
24-36 GALLON TANKS**



**J SERIES
6 GALLON TANK**



**J SERIES
13.5 GALLON TANK**



**J SERIES
24-50 GALLON TANKS**



5200 W. Clinton Avenue
Milwaukee, Wisconsin 53223

Tel. 414.354.0970 Toll Free 888.777.4085 Fax 414.354.6421

© 2003 Sterling

www.steamcontrolproducts.com

Receiver Size	A	B	C	D	E	F	G	H	Inlet
6 G	14.50	12.50	14.50	4.80	18.25	12.62	6.31	20.44	2"
13.5 G	14.88	13.19	18.50	9.25	19.12	13.50	6.75	24.00	2"
24 G	19.13	15.63	25.84	10.50	20.04	15.00	7.50	22.82	2"
36 G	18.63	15.13	27.34	11.25	27.54	22.50	11.25	31.76	3"
6 J	14.50	12.50	14.50	4.82	12.62	6.31	24.06	N/A	2"
13.5 J	14.88	13.19	18.50	9.25	13.50	6.75	24.94	N/A	2"
24 J	19.13	15.63	25.84	10.50	15.00	7.50	26.44	N/A	2"
36 J	18.63	15.13	27.34	11.25	22.50	11.25	35.38	N/A	3"
50 J	18.63	15.13	27.34	11.25	31.00	15.50	43.88	N/A	3"

75 and 110 Gallon oversized receivers are available

STERLCO PRODUCTS INCLUDE: HAND RADIATOR VALVES • THERMOSTATIC TRAPS • FLOAT AND THERMOSTATIC TRAPS • INVERTED BUCKET TRAPS • CAST IRON STRAINERS • BRASS STRAINERS • TANK AND PROCESS TEMPERATURE CONTROL VALVES • BOILER FEED UNITS • CONDENSATE PUMPS