



BOILER FEED PUMPS

4200 SERIES

CAST IRON TANK

ENERGY EFFICIENT DESIGN, PROVEN PERFORMANCE AND THE RIGHT SIZE FOR YOUR APPLICATION

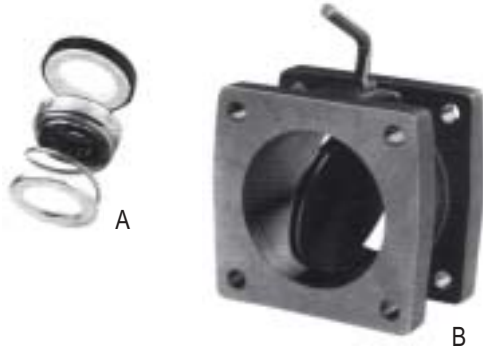
Sterlco® Boiler Feed Pumps set new standards of performance. Reliable and efficient, each unit features heavy-duty cast iron receivers for long operating life. In addition, 3450 RPM motors assure maximum efficiency while maintaining minimum motor horsepower. Available in a wide range of sizes, these U.S. made pumps have just the right accessories and options to meet your unique needs. What's more, a nationwide network of stocking distributors means fast, easy, year-round access to pumps and replacement parts.



FEATURES

- Heavy-duty cast iron receivers
- Simplex or duplex construction
- Bronze fitted centrifugal pumps
- Energy efficient 3450 RPM motors
- Automatic venting
- "Sterl-Seal" ceramic pump seal
- Heavy-duty make-up water valve
- Wide range of options and accessories
- Gauge glass





Built-In Features For Precise, Dependable Performance

- *Unit: Completely factory assembled and tested. Simplex units have one receiver, one make-up water valve, and one vertical pump and motor assembly. Duplex units have 2 vertical pumps. All units are supplied with a gauge glass on the side of the receiver and a flat perforated brass strainer at the inlet to the pump.*
- *Motors: Heavy-duty, ballbearing, close-coupled pump motors with stainless steel shaft. 3450 RPM for greater efficiency and more economical operation.*
- *Make-up Water Valve: Mechanical, plug mounted valve with stainless steel float. Rated up to 45 PSI inlet water pressure.*
- *Receiver: Heavy-duty cast iron construction. All receivers of 13.5 gallon size and larger are supplied in duplex design, with one pump opening covered when a simplex design is specified.*
- *Operation: Boiler feed pump(s) are controlled by a water level controller mounted on the boiler. If condensate is lost or delayed in the system, it is automatically replaced in the receiver through the make-up water valve.*
- *“SterlSeal” Pump Seal (A): Features the ultimate in ceramic technology for exceptionally long life. Because the seal runs on the bronze impeller hub, the motor shaft is literally outside the pump. Consequently, the shaft is not exposed to corrosion by condensate. Rated for temperatures up to 250°F.*
- *Isolation Valve (B): Optional on 4200 Series Boiler Feed Pumps*

Special Options

- *Isolation valves*
- *Electric alternator for duplex units*
- *Thermometer*
- *Solenoid operated make-up water valve with reverse acting float switch*
- *Special motor construction, such as totally enclosed and explosion proof, is available*
- *Magnetic starters with H-O-A selector switches*
- *1750 RPM motors, larger pumping capacities and higher discharge pressures - consult factory*
- *Complete NEMA 12 Control Panel*



Complete NEMA 12 Control Panel (Optional)

Motor Circuit Protector, HOA Selector Switch, External Reset, Control Circuit Transformer, Pilot Light (pump running), Removable Mounting Plate and Terminal Strip in a Single NEMA 12 Enclosure, Mounted and Wired, with Single Point Power Connection.

4200 Series Engineering and Capacity Data

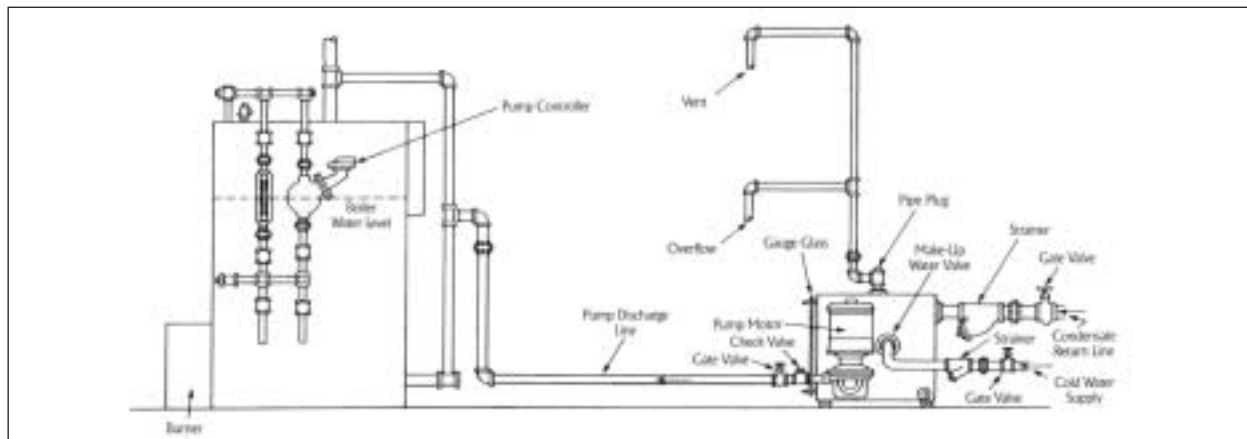
BOILER H.P.	DISCHARGE PRESSURE P.S.I.	PUMP CAP. G.P.M.	MOTOR H.P.	REC. CAP. GAL.	UNIT MODEL NO.		SHIPPING WT. LBS.	
					SIMPLEX	DUPLEX	SIMPLEX	DUPLEX
15	20	3	1/3	36	4222-GF	4222-GDF	465	500
	30		1/2		4232-JF	4232-JDF	505	580
	40		1		4242-JF	4242-JDF	510	590
	50		2		4252-JF	4252-JDF	520	600
30	20	6	1/3	36	4224-GF	4224-GDF	465	500
	30		1/2		4234-JF	4234-JDF	505	580
	40		1		4244-JF	4244-JDF	510	590
	50		2		4254-JF	4254-JDF	520	600
45	20	9	1/3	50	4226-GF	4226-GDF	575	610
	30		1/2		4236-JF	4236-JDF	615	690
	40		1		4246-JF	4246-JDF	620	700
	50		2		4256-JF	4256-JDF	625	710
60	20	12	1/3	50	4228-GF	4228-GDF	575	610
	30		1/2		4238-JF	4238-JDF	615	690
	40		1		4248-JF	4248-JDF	620	700
	50		2		4258-JF	4258-JDF	625	710
75	20	15	1/2	75	42210-GF	42210-GDF	785	820
	30		3/4		42310-JF	42310-JDF	825	900
	40		1		42410-JF	42410-JDF	830	910
	50		2		42510-JF	42510-JDF	835	920
100	20	20	1/2	110	42215-GF	42215-GDF	1043	1078
	30		1		42315-JF	42315-JDF	1085	1160
	40		1-1/2		42415-JF	42415-JDF	1095	1180
	50		2		42515-JF	42515-JDF	1100	1200
150	20	30	3/4	110	42220-GF	42220-GDF	1043	1078
	30		1		42320-JF	42320-JDF	1085	1160
	40		1-1/2		42420-JF	42420-JDF	1095	1180
	50		3		42520-JF	42520-JDF	1110	1200

Sample Specification

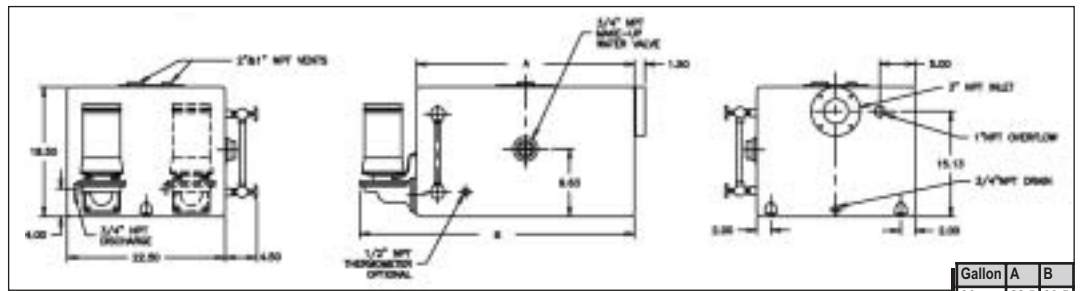
Furnish and install, where indicated on plans, a Sterling 4200 Series (simplex or duplex) boiler feed unit(s). Each pump shall deliver _____ GPM at a discharge pressure of _____ PSI. The unit shall be factory assembled and tested by the pump manufacturer and shall include a receiver, pump(s), make-up water valve, gauge glass, and accessories.

The receiver shall have a capacity of _____ gallons and

be of heavy-duty cast iron construction. Pump(s) shall be of the centrifugal type with two-piece enclosed brass impeller, cast iron housing, high temperature (250°F) mechanical seal and stainless steel motor shaft. The make-up water valve is to be a mechanical, plug-type with a stainless steel float. A flat perforated brass strainer shall be provided at the inlet to the pump from the tank. The motor(s) shall be vertical, 3450 RPM, _____ phase, _____ volt, 60 cycle, _____ H.P.

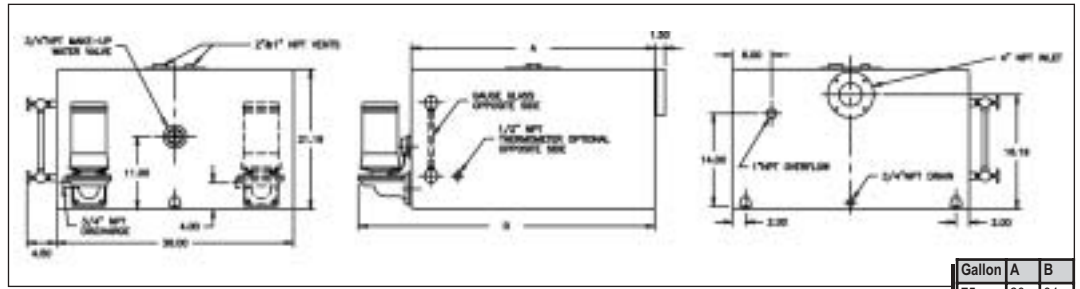


4200-GF SERIES 36/50 GALLON



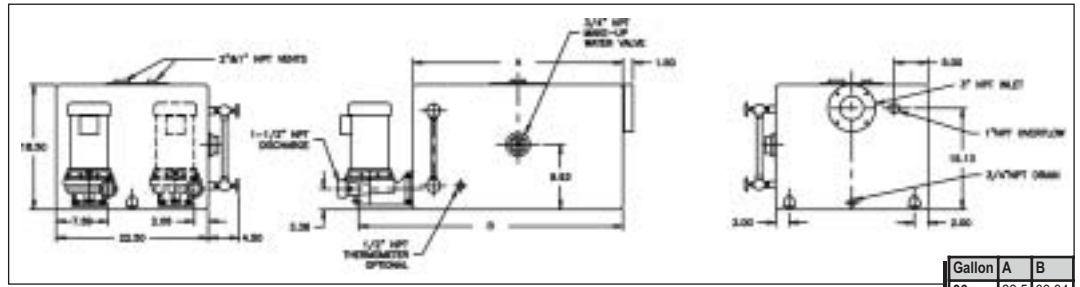
Gallon	A	B
36	22.5	30.5
50	31	39

4200-GF SERIES 75/110 GALLON



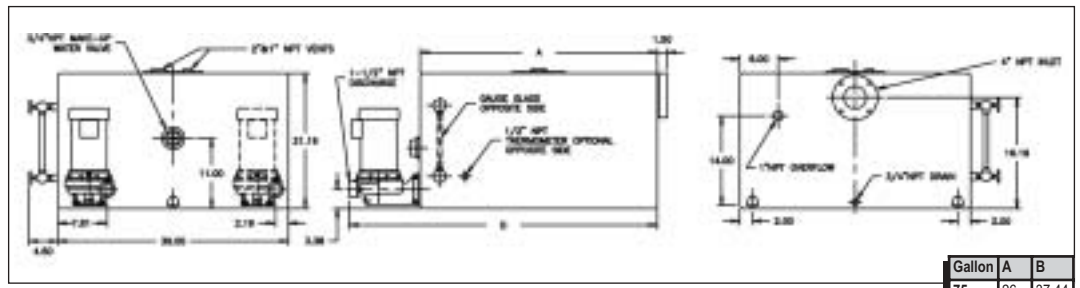
Gallon	A	B
75	26	34
110	37	45

4200-JF SERIES 36/50 GALLON



Gallon	A	B
36	22.5	33.94
50	31	42.44

4200-JF SERIES 75/110 GALLON



Gallon	A	B
75	26	37.44
110	37	48.44



5200 W. Clinton Avenue
 Milwaukee, Wisconsin 53223
 Tel. 414.354.0970 Toll Free 888.777.4085 Fax 414.354.6421
 ©2003 Sterling www.steamcontrolproducts.com

STERLCO PRODUCTS INCLUDE: HAND RADIATOR VALVES • THERMOSTATIC TRAPS • FLOAT AND THERMOSTATIC TRAPS • INVERTED BUCKET TRAPS • CAST IRON STRAINERS • BRASS STRAINERS • TANK AND PROCESS TEMPERATURE CONTROL VALVES • BOILER FEED UNITS • CONDENSATE PUMPS