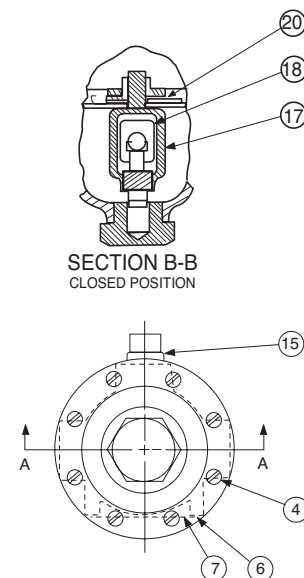
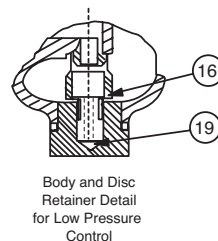
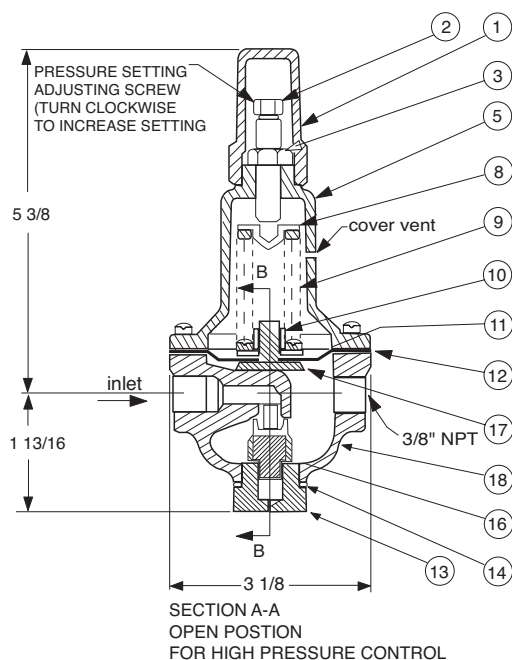




CRD

Pressure Reducing Control



Size (Inch)	Stock Number	Adjustment Range	
		psi	Ft. of Water
3/8	71943-03K	15 - 75	35 - 173
3/8	71943-04H	30 - 300	69 - 692
3/8	71943-07A	2 - 6.5	4.5 - 15
3/8	71943-08J	2 - 30	4.5 - 69
Factory set pressure		PSI * PER TURN	
15 - 75 set @ 20 psi		9.0	
30-300 set @ 60 psi		27.0	
2 - 6.5 set @ 3.5 psi		.61	
2 - 30 set @ 10 psi		3.0	

*APPROXIMATE- FINAL ADJUSTMENT SHOULD BE WITH A PRESSURE GAUGE AND WITH FLOW

When ordering parts specify: • All nameplate data • Item Description • Item number

ITEM	DESCRIPTION	MATERIAL	PART NUMBER	LIST PRICE
1	Cap	PL	67628J	
2	Adjusting Screw	BRS	7188201D	
3	Jam Nut (3/8 - 16)	SS	6780106J	
4*	Machine Screw (Fil.Hd.) 8 Req'd	303	6757821B	
5	Cover	BRS	C2544K	
6	Nameplate Screw	SS	67999D	
7	Nameplate (15-75 psi)	BRS	C002201G	
8	Spring Guide	302	71881H	
9	Spring (15-75 psi)	CHR/VAN	71884B	
	Spring (30-300 psi)	CHR/VAN	71885J	
	Spring (2-6.5 psi)	SS	82575C	
	Spring (2-30 psi)	SS	81594E	
10	Hex Nut	303	71883D	
11	Diaphragm Washer	302	71891G	
12*	Diaphragm	NBR	C6936D	
13	Plug, Body	BRS	V5653A	
14*	Gasket	Fiber	40174F	
15	Plug	BRS	6766003F	
16*	Disc Retainer Assy. (15-75 psi)	BZ/Rub	C5256H	
	Disc Retainer Assy (30-300 psi)	BZ/Rub	C5256H	
	Disc Retainer Assy (2-6.5 psi)	BZ/Rub	C5255K	
	Disc Retainer Assy (2-30 psi)	BZ/Rub	C5255K	
17	Yoke	VBZ	V6951H	
18	Body & 1/4" Seat Assy	BR/SS	8339702G	
19*	Bucking Spring (2-30 psi) (2-6.5 psi)	302	V0558G	
20	Belleville Washer	STL	7055007E	
	Repair Kit (No Bucking Spring)		9170003K	
	Repair Kit (W/Bucking Spring)		9170001D	

*SUGGESTED REPAIR PARTS

Distributed By: M&M Control Service, INC.

Phone: 800-876-0036

Fax: 847-356-0747

Email: Sales@mmcontrol.com